



South Central Ambulance Service **NHS**
NHS Foundation Trust

South Central Ambulance NHS Foundation Trust Local Network Update.

Portsmouth

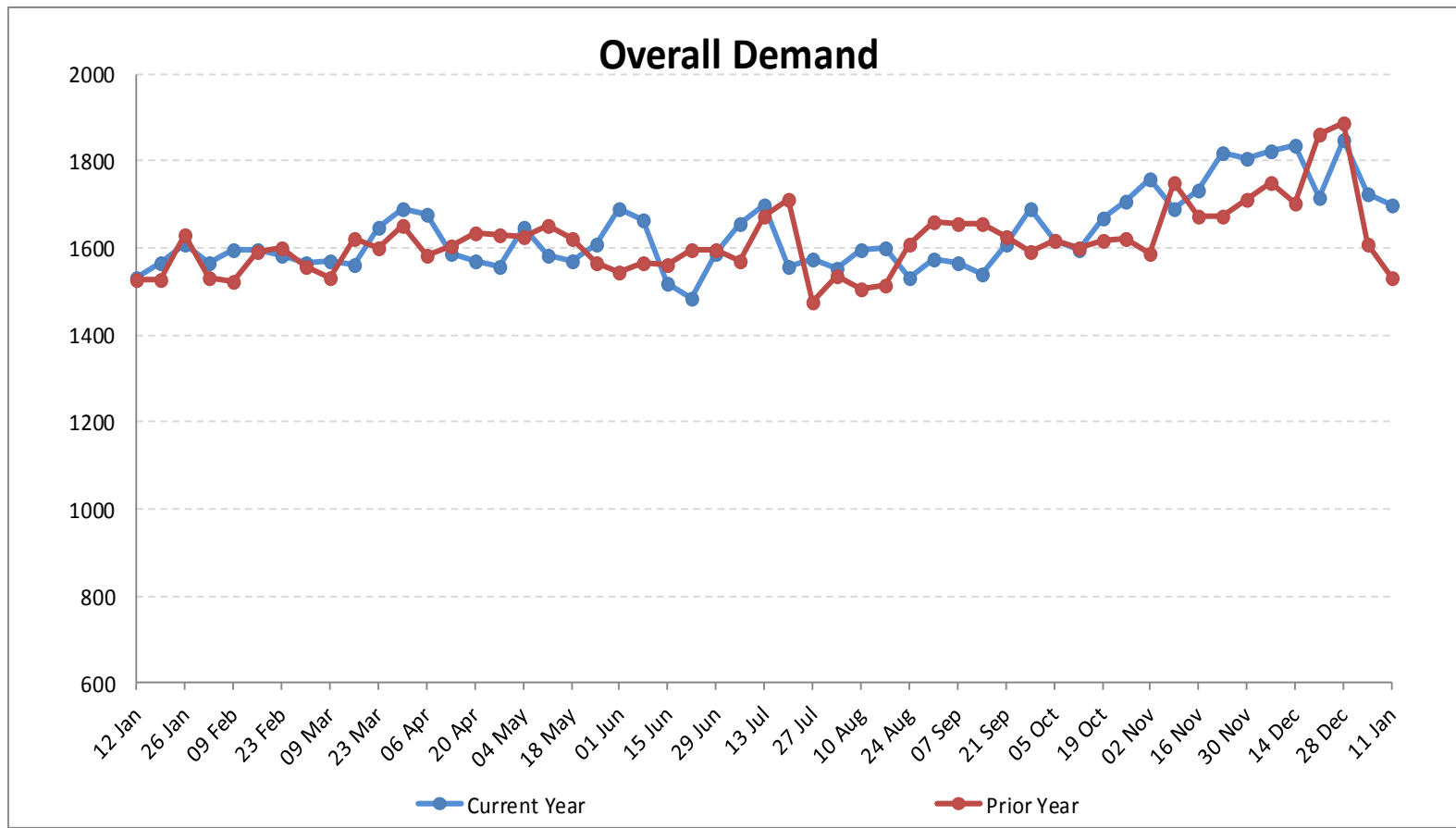
Get involved



Operational Context

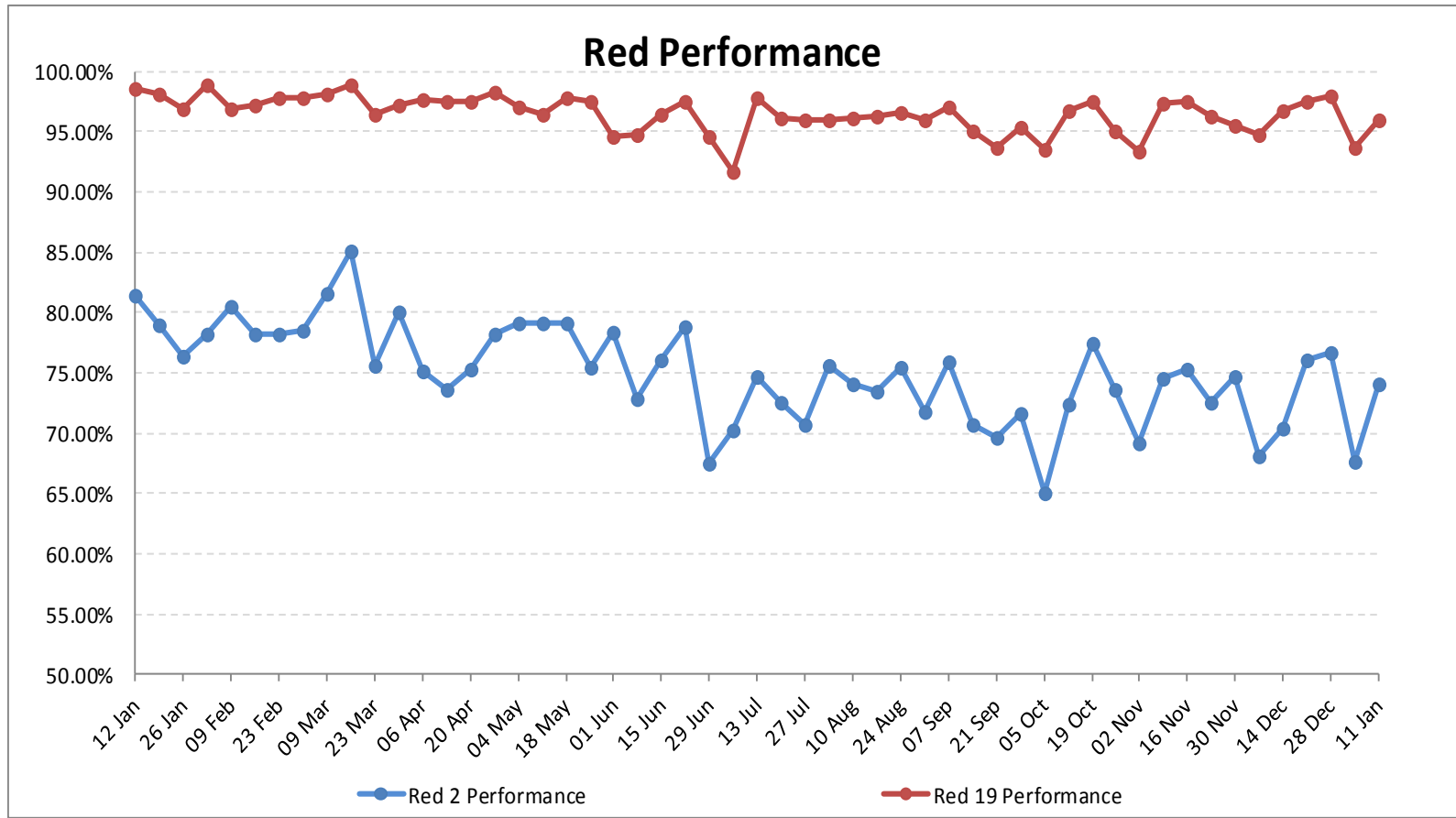
- SE Hampshire Demand
- SE Hampshire Performance
- Portsmouth CCG Performance
- Developments
- Risks

Overall Demand SEOCE 2015/16



Proud to be caring for you!

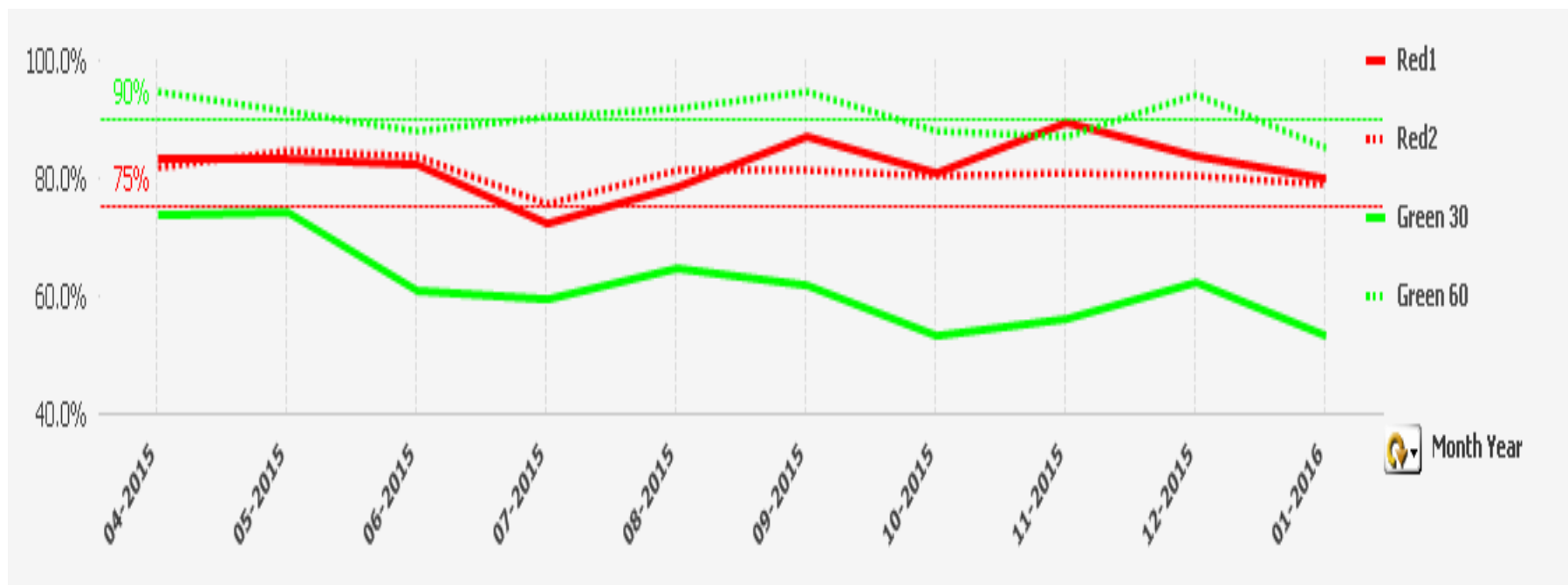
Performance SEOCE 2015/16



Proud to be caring for you!



Portsmouth CCG Performance.



Get involved



Developments

- Specialist Paramedic Recruitment.
- Band 6 Paramedic.
- Certificate in Paramedic Practice.
- Patient Long wait reviews.
- Revisit of Rotas to improve staff retention.
- Introduction of ePR.
- Continued link with SRG and wider system resilience/escalation plans and actions.
- System Work streams (including appropriate conveyance, and Care Home, Residential homes, review of Frailty patients (Green)).
- Vanguard Pilot (Gosport, ? Portsmouth)



Risks

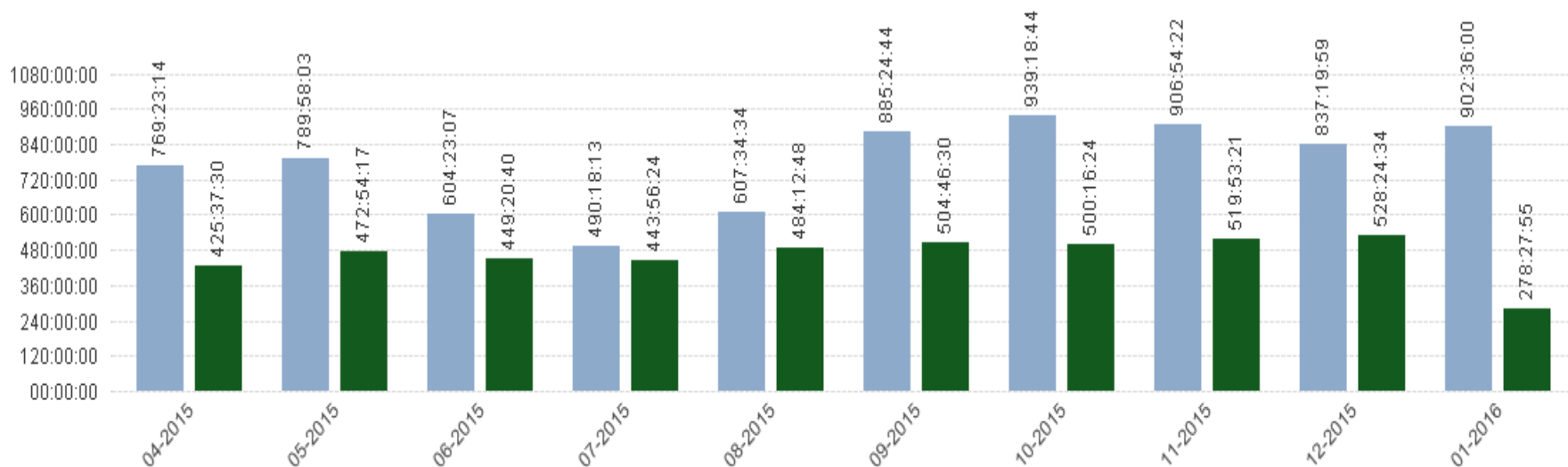
- Retention of experienced staff.(Need to urgently review rosters).
- Recruitment of qualified staff.
- Availability of alternative care pathways.
- Safe Space.
- Winter resilience.
- Hospital/System capacity and its impact on Hospital Handover delays.

Get involved



Excess Handover Delays.

Handover Excesses Clear Up Excesses



Month Year

Get involved



Questions

Get involved